



2024

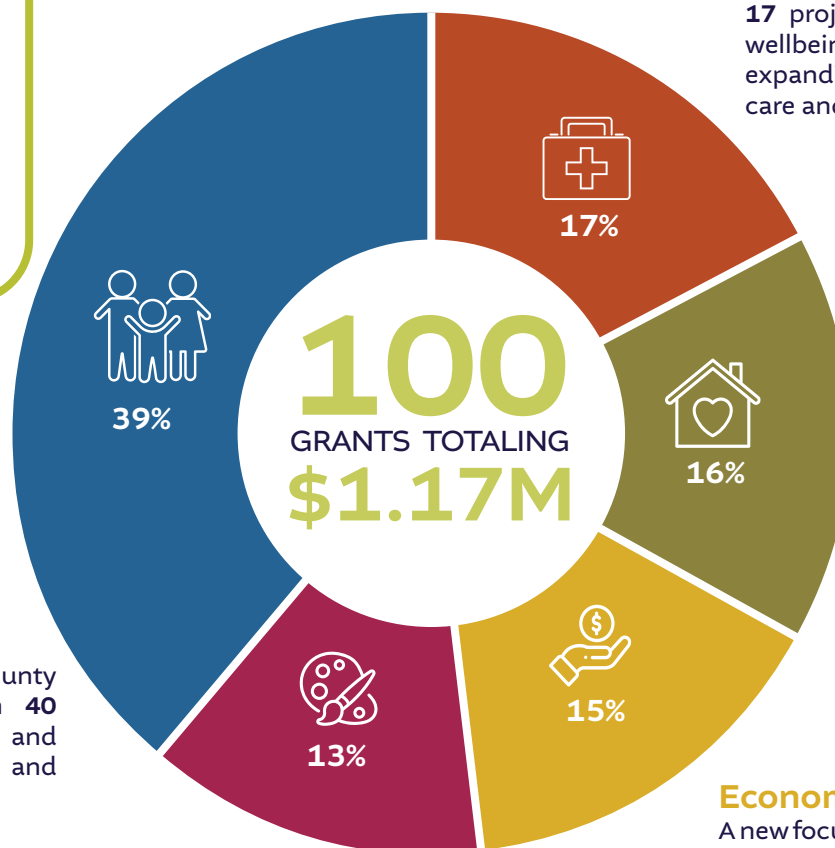
COMMUNITY GRANTS

Project Awards



2024 PROJECT GRANT DISPERSMENT

- 10** first-time grant recipients
- 19** projects will take place outside of Worcester
- 19** projects will take place both in Worcester and other parts of the County



Youth & Families

We're investing **\$458,000** in Worcester County to support youth and families through **40** projects focused on youth development and empowerment, educational enrichment, and support for immigrant families. [page 7-8](#)

Arts & Creativity

We are supporting arts and creativity in Worcester County, making **\$149,500** in grants to **16** organizations that will offer a diverse range of projects to engage artists and the broader community in creative programs, workshops and events. [page 3](#)

Health & Wellbeing

We're proud to invest **\$204,500** to support **17** projects that will foster greater health and wellbeing for Worcester County residents, expanding access to physical and mental health care and support services. [page 6](#)

Basic Needs

To support residents' most basic needs like food and shelter, we're making **\$188,000** in grants to **13** projects that will support housing assistance, food security, emergency supports and essential resources. [page 4](#)

Economic Opportunities

A new focus area this year, we're investing **\$171,000** to support **14** projects that support Worcester County residents' upward economic mobility, including workforce development, career training, and skill-building opportunities. [page 5](#)

2024 PROJECT GRANT RECIPIENTS

Arts & Creativity

19 Carter | \$7,500 ●
Making Music Accessible Series

Ambitious Academy | \$5,000 ●
Photography Workshops for Youth

ArtsWorcester | \$10,000
Future Arts Workers of Worcester

Crocodile River Music/African Arts in Education | \$12,500
2025 African Music Concert Series

Friends of the Stone Church | \$7,500
Faces of Gilbertville, Voices of Gilbertville

Guardians of Tradition | \$12,500
Weaving Worcester's Cultures Through Kites

Friends of the Stone Church | \$7,500
Faces of Gilbertville, Voices of Gilbertville

Guardians of Tradition | \$12,500
Weaving Worcester's Cultures Through Kites

Music Mania Television: Show Me The Funny: Stand Up Comedy Workshop

Hosted at the Worcester Senior Center, these stand-up comedy workshops will bring together senior citizens from centers across the Commonwealth, creating a safe space for expression and interaction among isolated older adults.

**MUSIC MANIA
TELEVISION STUDIOS
LLC.**



19 Carter: Making Music Accessible Program

19 Carter will foster community connections through music and provide platforms for both seasoned and beginner musicians by offering a range of free or low-cost events, including monthly concerts, open mic nights, jazz jams and Celtic music sessions.

Innovation Learning Center | \$10,000
Creative Minds

Joy of Music Program, Inc. | \$7,500
Books, Beats, and Brushes

Mass Humanities | \$10,000
Worcester Clemente Course

Music Mania Television | \$12,500
Show Me The Funny: Stand Up Comedy Workshop

Open Door Arts, Inc. | \$10,000
Open Door Gallery at the Worcester Art Museum

Open Door Arts, Inc. | \$5,000
Connecting and Creating through the Arts

Raices Cultural Arts | \$18,000
Youth Dance Program

Refugees & Immigrants Cultural Empowerment Mass | \$5,000 ●
Culture Arts Program

Worcester Center for Crafts | \$7,500 ●
Enameling for All

2024 PROJECT GRANT RECIPIENTS

Basic Needs

Ansaar of Worcester | \$7,500

Housing Assistance & Home Buying Education

Catholic Charities of the Diocese of Worcester | \$10,000

Emergency Stabilization Services

Central Massachusetts Housing Alliance, Inc | \$17,500

Public Education and Advocacy

Community Servings | \$12,000

Medically Tailored Nutrition Program

Dignity Matters, Inc. | \$15,000

Provision of Menstrual Products

El Buen Samaritano Food Program | \$12,500

Summer Eats

Friendly House | \$15,000

Welcome, Neighbor! Refugee Donation Center

Open Sky Community Services | \$25,000

South County Housing Assistance Program

Dignity Matters: Menstrual Product Provision

Dignity Matters leverages a network of 175 nonprofits to distribute menstrual products, bras and underwear to ensure homeless and low-income women and girls in Worcester County can manage their periods safely and with dignity.



Ansaar: Housing Assistance & Home-Buying Education

Three years after an influx of Afghan refugees settled in Worcester, Ansaar will be helping them purchase their first home by providing support with applications and educating them on the home-buying process.

Pernet Family Health Service, Inc. | \$20,000

Emergency Assistance Program

Quaboag Hills Community Coalition | \$6,000

Quaboag Hills Community Fund

Regional Environmental Council, Inc. | \$7,500

Community and Mobile Farmers Markets

Southeast Asian Coalition of Central Massachusetts | \$25,000

Food Security

Student Clinic for Immigrant Justice, Inc. | \$15,000

Expanding Access to Immigrant Justice

2024 PROJECT GRANT RECIPIENTS

Economic Opportunities

Boys & Girls Club of Worcester | \$25,000
Workforce Development for Teens

Center for Women & Enterprise | \$10,000
Roadmap to Entrepreneurship for Women

Empower Children for Success | \$12,000
Reducing Barriers to Family Childcare Entrepreneurship

Friendly House: HBCU College Tour | \$15,000
HBCU College Tour

Literacy Volunteers of Greater Worcester | \$10,000
ESOL for New Americans

NewVue Communities | \$6,500
Financial Fitness

Notre Dame Health Care | \$12,500
Educational Bridge Program

Organization for Refugee and Immigration Success (ORIS) | \$10,000
Employment Programs

Notre Dame Health Care: Educational Bridge Program

Notre Dame's Educational Bridge Program supports health care workers across the County with comprehensive educational and professional development services, aiming to improve workforce recruitment and retention and strengthen the local health care workforce.



Worcester Youth Center: Cooking Up a Career

This program teaches culinary basics, offers industry certifications, and develops soft skills to prepare participants for the workforce. It is aimed at older, disconnected and underemployed youth aged 17-24 and includes wrap-around support and follow up services to ensure participants' success in employment or education.

Quinsigamond Community College | \$12,500
Foundation Bridges to College

Training Resources of America, Inc. | \$10,000
ESOL Program

Tri-Valley, Inc. | \$15,000
Case Management Accelerated Training

Worcester Refugee Assistance Project | \$10,000
English Language Learning

Worcester State Foundation | \$12,500
Club Educación at the Latino Education Institute

Worcester Youth Center | \$10,000
Cooking Up A Career

2024 PROJECT GRANT RECIPIENTS

Health & Wellbeing

Community Health Awareness Network Grows Equity (CHANGE) | \$10,000
Healthy Habits Initiatives

Ellie Fund | \$15,000
Equitable Pathways to Breast Cancer Care

Family Health Center of Worcester | \$10,000
Perinatal Group Programs

Genesis Club House, Inc. | \$13,000
Homeless Population Outreach Pilot Project

Inner Voice Outer Change | \$12,500
After School Music Program

Lucy's Love Bus | \$7,500
Integrative Therapies for Childhood Cancer Families

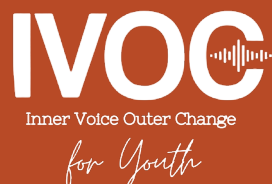
New Hope, Inc. | \$7,500
Human Trafficking Awareness & Prevention

Open Sky Community Services | \$10,000
Safe Homes

Pathways for Change | \$18,000
Medical Accompaniment

Inner Voice Outer Change: After School Music Program

This after school program will serve approximately 50 students across three Worcester Public Schools, providing students with organized discussions led by a licensed mental health counselor and technical training in music development and recording.



UMass Memorial Health Care: Training the Community Doula Workforce

This program aims to address disparities in Black maternity care by recruiting and training a diverse group of doulas reflective of the local population in Worcester County, equipping 15 doula trainees with the necessary skills and certification to support Black birthing people.

RIA, Inc. | \$6,000
Survivor Support Groups

Safe Exit Initiative | \$15,000
Healthcare for Individuals with Experience in the Sex Trade

Senior Connection | \$12,500
Care Express, Mobile Health and Outreach Clinic

UMass Memorial Health Care, Inc. | \$12,500
Training the Community Doula Workforce

Welcoming Alliance for Refugee Ministry | \$17,500
Hope Groups-Mental Health for Refugee Women

Worcester Common Ground, Inc. | \$10,000
Residential Services Coordinator

Worcester RISE Health Clinic | \$12,500
Refugee and Immigrant Maternal Child Health

Youth Opportunities Upheld (YOU), Inc. | \$15,000
Gender Wellness Initiative

2024 PROJECT GRANT RECIPIENTS

Youth & Families

African Community Education Program (ACE) | \$20,000
Outreach & Case Management

Ascentria Community Services, Inc. | \$20,000
Immigration and Legal Assistance Program

Bancroft School | \$20,000
Worcester Partnership Summer Program

Boys & Girls Club of Lunenburg | \$12,500
GROW SMART

Center for Family Connection | \$10,000
Worcester based Families Summer Intensive

Community Legal Aid, Inc. | \$22,000
Immigrant Outreach & Advocacy Project

Edward Street Child Services | \$15,000
Master Teacher Consultation Program

Family Services of Central Massachusetts | \$15,000
The Summer Literacy Initiative

Free Worcester | \$7,000 ●
Parent Study on Improving Access to Autism Services

George Marston Whitin Memorial Community Assn., Inc. | \$17,000
WCC Youth Outreach

Meryl's Safe Haven: Transitional Youth Empowerment Program

This program supports young people aged 18-24 who are aging out of the foster care system and are currently homeless or at risk of homelessness, providing them with the resources needed to achieve self-sustainability and secure permanent housing.



Our Bright Future: STEM Focused After School Program

Our Bright Future's STEM program will support students across Worcester, Webster, Dudley and Southbridge, providing after-school activities including robotics, 3D printing, bioscience, arts and crafts, financial literacy and more.

Girl Scouts of Central and Western MA | \$12,500
Community-Based Programs

Girls Incorporated of Worcester | \$25,000
After School Innovation Clubs

Guild of St. Agnes | \$7,500
Summer Enrichment Programs

High Ridge Harmony Farm | \$5,000 ●
Bridging the Gap for Underprivileged Communities

Horizons for Homeless Children | \$7,500
Playspaces Across Worcester County

Massachusetts Adoption Resource Exchange, Inc. | \$10,000
Paths to Permanency and Adoption

Massachusetts Women of Color Coalition | \$10,000 ●
Intergenerational Leadership Academy for Girls of Color

Meryl's Safe Haven | \$10,000 ●
Transitional Youth Empowerment Program

New England Botanic Garden at Tower Hill | \$10,000
Project Bloom

North Quabbin Citizen Advocacy, Inc. | \$10,000
Supportive Relationships for Individuals with Disabilities

Organization for Refugee and Immigration Success (ORIS) | \$10,000
Case Management

2024 PROJECT GRANT RECIPIENTS

Youth & Families Cont'd

Our Bright Future Inc | \$10,000 ●
STEM After School Program

Pernet Family Health Service, Inc. | \$7,000
Youth Program

Pleasant Street Neighborhood Network Center | \$12,500
Cultural Exchange Through Soccer

Plummer Youth Promise | \$8,000 ●
Permanency Mediation

Reach Out and Read | \$5,000
Worcester County Rx for Success

Regional Environmental Council, Inc. | \$10,000
YouthGROW

SEIU Education & Support Fund | \$5,000
Massachusetts Child Care Training Fund

Straight Ahead Ministries, Inc. | \$17,500
Youth Reentry Program

The Torch Foundation | \$10,000
Teen Social-Emotional Intelligence Program

United Way of Tri-County | \$10,000
WHEAT Community Connections

Worcester Area Mission Society: Pre-K Plus

The Pre-K Plus program provides early education and socialization opportunities to children from low-income families in Worcester and Fitchburg, helping to prepare them for kindergarten. The program offers bilingual support to bridge language barriers for the many families whose first language is not English.



Worcester Youth Orchestras: Strengthening Community Access to the Arts

In an effort to support young musicians in under-served areas of Worcester County, Worcester Youth Orchestras will provide in-school and out-of-school learning opportunities to students of the Quabbin Regional School District, addressing barriers by providing financial aid, transportation logistics and instrument loans.

Worcester Area Mission Society | \$7,500
Pre-K Plus

Worcester Chamber Music Society | \$7,500
Neighborhood Strings

Worcester Education Collaborative | \$12,000
Woo-Labs

Worcester Youth Center | \$10,000
Case Management

Worcester Youth Orchestras | \$6,000
Strengthening Community Access to the Arts

WriteBoston | \$15,000
ALTAS Program Expansion

YMCA of Central Massachusetts | \$8,000
The Achievers Program

Youth Opportunities Upheld (YOU), Inc. | \$10,000
John S. Laws Dynamy Youth Academy

YWCA of Central Massachusetts | \$10,000
Girls CHOICE

CONTRIBUTING FUNDS

This project support was made possible thanks to the contributions from the following discretionary and field of interest funds hosted at Greater Worcester Community Foundation.

Albert R. and Carolyn Jones Fund
Anna S. and Warren G. Davis Fund
Arthur E. and Janet S. Jones Fund
Barbara E. and William E. Christensen Fund
Bradford J. Kemp Fund
Bradley C. Higgins Fund
Brian M. and Maureen E. Chandley Fund
Carol L. Seager Fund
Central Mass Health Standards Fund
Child Wellness Fund
Community Ministries Fund
Community Response Fund
Corinne Charron Turner Fund
Creative Worcester County Fund
Curtis G. Watkins Education Fund
Cynthia and Warren C. Lane Jr. Memorial Fund
Dan R. and F. Ann Lewis Charitable Fund
Dr. Harold M. Constantian Fund
Dr. Leon, Arax and Sona Husisian Fund
Eliza D. and Cora J.D. Dodge
Fairman C. Cowan Fund
Fallon/OrNda Community Health Fund
Frances S. and Francis H. Dewey III Fund
Fund for the Arts and Humanities

Garfield Berry Fund
George I. Alden Education Fund
Gertrude Alice Johnson Fund
GLBT Endowment Fund
Harriet Miller Hight Education Fund with the Assoc. of Colored Peoples
Haskell and Ina Gordon Fund
Irving N. and Annabel Wolfson Fund
James J. and Patricia A. Moynihan Fund
Joseph A. Tosoni Fund
Margery M. and O. Vincent Gustafson Fund
Marian B. Kubelus and Marian Zell Nesbit Memorial Fund
Marion Stoddard Fletcher Fund
Marlene and David Persky Fund
Mary Tonna Cocaine and Family Charitable Fund
Max H. Kuhner and Eloise A. Kuhner Fund
Nathan and Barbara Greenberg Fund
Norman L. and Dorothy A. Sharfman Fund
Olive I. and Anthony A. Borgatti Fund
Quota International of Worcester Fun
Raymond P. Harold Disc. Fund
Robert S. and Helen A. Bowditch Fund
Ruth and John Adam Fund
Saint Vincent Healthcare Fund
Seven Hills Youth Fund

About Greater Worcester Community Foundation

Greater Worcester Community Foundation fosters greater giving and impact for all of Worcester County.

For more than 45 years, the Foundation has been working to empower individuals to become philanthropists by connecting donors to high impact nonprofits and community partners. The Foundation employs its expertise and resources to address the region's most urgent needs.

The Foundation's community grants program makes up a quarter of its annual grantmaking, which totals approximately \$10 million a year. The community grants process is competitive, and nonprofits can apply for general operating support, project support, or both. Community grants are made possible thanks to donors that have set up discretionary or field of interest funds with the Foundation.

To learn more, please visit www.greaterworcester.org

